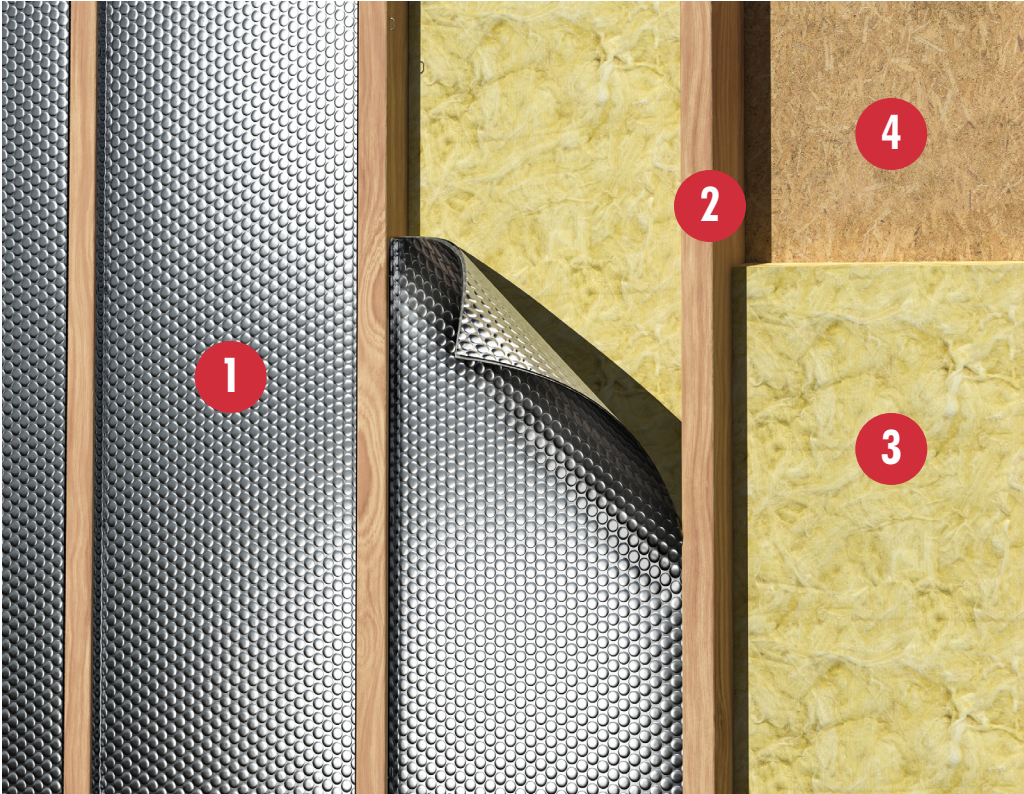


# DIY | Wall - Exterior 2" x 4" | Total R-14

## R-3.9 and a Vapor/Moisture Barrier for the Reflectix® Reflectix® Installation Instructions



1. Reflectix® Insulation
2. 2" x 4" Stud
3. Un-faced Fiberglass
4. Exterior Panel

### Tools Required:

- Safety Glasses
- Staple Gun
- Tape Measure
- Utility Knife/Scissors

**Note:** Installation instructions and illustrated drawings are recommendations only, while proper local construction methods are the responsibility of the installer.

### Recommended Products:

- Reflective/Bubble/Bubble/Reflective - Roll: BP24025 (24" x 25')
- Staple Tab, Reflective/Bubble/Bubble/Reflective - Roll: ST16025 (16" x 25'), ST24025 (24" x 25')

### Installation Instructions:

- Install R-13, un-faced, per manufacturer's specifications.
- Place one corner edge of the Reflectix® in an upper corner of the stud cavity. Staple the product to the side of the stud (creating a 3/4" tab on the product and compressing into the fiberglass (3/4" as well)). The edge of the product should be flush with the forward corner of the stud.
- Proceed "down" stapling to the side of the stud every 2" - 3".
- Repeat procedure on opposite stud.
- The Goal: Create a continuous 3/4" air space between the product and the interior panel.
- Finish wall interior.

## Review These Important Safety Guidelines Prior to Installation:

- **ALWAYS** check local building codes before installing Reflectix®.
- **ALWAYS** check the area you are insulating and make any needed repairs. Any worn wiring should be replaced before you begin installing Reflectix®.
- **ALWAYS** make sure work areas are well ventilated and well lighted.
- **ALWAYS** use eye protection when operating a staple gun.
- **ALWAYS** use caution and common sense when using a staple gun. Be aware of where electrical wiring is located. Stapling into a wire can cause severe shock or death. **NEVER** staple into electrical wiring.
- **ALWAYS** be careful when working with large pieces of Reflectix® on windy days.
- When installing Reflectix® on bright sunny days, it is best to wear sunglasses.
- Do not work in areas such as attics when temperatures are too hot.
- Visit our website at [www.reflectixinc.com](http://www.reflectixinc.com) for additional product and installation information.

**Please Note:** The intention of these Installation Instructions and 3-D renderings are for the sole purpose of illustrating the correct location and relative position of the Reflectix® products in specific building assemblies. The correct construction methods and techniques are the responsibility of the installer or contractor. The methods outlined are recommendations on location of the Reflectix® products as a guideline. There are no claims on the part of Reflectix, Inc. that these building assemblies are finite standards or meet building code requirements (as they can vary by region).



### REFLECTIVE PRODUCTS

A Division of Balcan Innovations, Inc.

#1 School St. (POB 108) Markleville, IN 46056

(800) 879-3645

E: [customerservice@reflectixinc.com](mailto:customerservice@reflectixinc.com)

[www.reflectixinc.com](http://www.reflectixinc.com)

Revised 022025