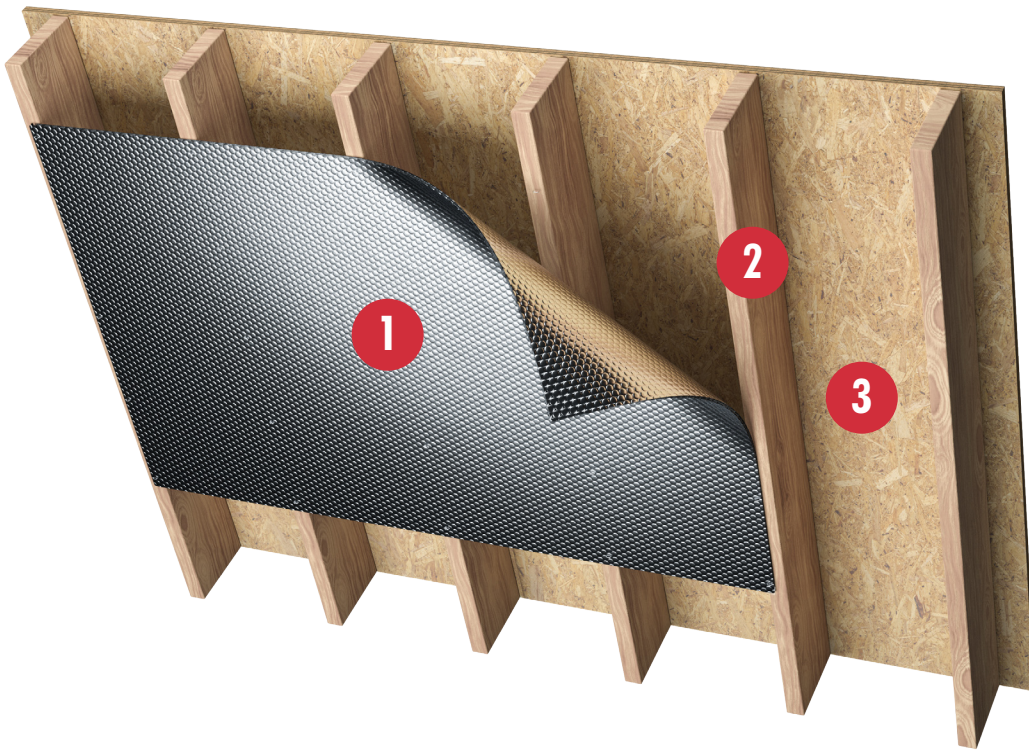


# Pro | Attic | Radiant Barrier

## Reflectix® Installation Instructions



1. Reflectix® Product
2. 2"x 6" Rafter
3. Roof Decking

### Tools Required:

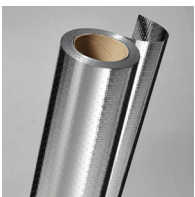
Safety Glasses  
Staple Gun  
Tape Measure  
Utility Knife/Scissors

**Note:** Installation instructions and illustrated drawings are recommendations only, while proper local construction methods are the responsibility of the installer.

### Recommended Products:

- Reflective/Bubble/Bubble/Reflective - Roll: BP24050 (24"x 50'), BP24100 (24"x 100'), BP48050 (48"x 50'), BP48100 (48"x 100'), BP48125 (48"x 125')
- Staple Tab, Reflective/Bubble/Bubble/Reflective - Roll: ST16050 (16"x 50'), ST16100 (16"x 100'), ST24050 (24"x 50'), ST24100 (24"x 100')
- Radiant Barrier, Reflective/Woven Fabric/Reflective - Roll (Heavy Duty): RB4812550 (48"x125')

**Note:** Attic Radiant Barriers provide benefit on hot sunny days. For this reason, they are recommended for installation in the Southern Zone of the USA (due to the amount of AC usage). However, they will provide reduced heat gain into the home wherever they are installed. If you need to verify your location, use our "Zip Code Zone Locator" function at [www.reflectixinc.com/zip-code-zone-locator](http://www.reflectixinc.com/zip-code-zone-locator), or contact our Customer Service Group at (800) 879-3645.



### Reflective/Woven Fabric Radiant Barrier

Installation Instructions: (There are 2 options)

#### 1. Underside of Rafter Method (depicted in illustration)

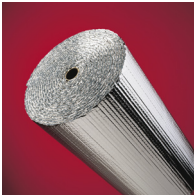
- Check the attic area and make any needed repairs before installing Reflectix®.
- Unroll the Reflectix® as you work and cut it to suitable lengths (8' to 12') with scissors or utility knife.

- If a helper is available, rolling out longer lengths of product with one person stapling and the other holding the end of the product makes for a quicker installation.
- Allow for proper ventilation. See note below on ventilation.
- Install product perpendicular to the rafters with a 2" overlap on the seams (no taping required).
- Staple the product to the rafters at 2" to 3" intervals.
- Leave a 2" to 3" gap on each side of the roof peak and a gap at the lower edge of the roof line (within 18" OK depending on roof pitch).
- Staple to the face of the studs on gables and insure at least a 1" gap around all vents.

## 2. Staple to the Deck Method - Southern Zone of the USA Only

For the Regional Recommendation for this Installation Method, please verify the location of your home with the "Zip Code Zone Locator" function at [www.reflectixinc.com/zip-code-zone-locator](http://www.reflectixinc.com/zip-code-zone-locator), or contact our Customer Service Group at (800) 879-3645.

- Cut the entire roll of product into 16" or 24" lengths with a miter saw (depending on rafter spacing).
- Begin at the top of the cavity. Run product flush to the decking, parallel to the rafter.
- Staple sheet directly to the deck (nails poking through sheet from above will not interfere with performance).
- Do not block any venting (cut around). No need to cover rafters (no loop around).



Reflective/Bubble Insulation

Installation Instructions: (There are 3 options)

### 1. Underside of Rafter Method (depicted in illustration)

- Check the attic area and make any needed repairs before installing Reflectix®.
- Unroll the Reflectix® as you work and cut it to suitable lengths (8' to 12') with scissors or utility knife.
- If a helper is available, rolling out longer lengths of product with one person stapling and the other holding the end of the product makes for a quicker installation.
- Allow for proper ventilation. See note below on ventilation.
- Install product perpendicular to the rafters with a 2" overlap on the seams (no taping required). Staple the product to the rafters at 2" to 3" intervals.
- Leave a 2" to 3" gap on each side of the roof peak and a gap at the lower edge of the roof line (within 18" OK depending on roof pitch).
- Staple to the face of the studs on gables and insure at least a 1" gap around all vents.

## 2. Staple to the Deck Method - Southern Zone of the USA Only

For the Regional Recommendation for this Installation Method, please verify the location of your home with the "Zip Code Zone Locator" function at [www.reflectixinc.com/zip-code-zone-locator](http://www.reflectixinc.com/zip-code-zone-locator), or contact our Customer Service Group at (800) 879-3645.

- It is easiest to install either 16" or 24" wide product (depending on rafter spacing).
- Begin at the top of the cavity. Run product flush to the decking, parallel to the rafter.
- Staple sheet directly to the deck (nails poking through sheet from above will not interfere with performance).

- Do not block any venting (cut around).
- No need to cover rafters (no loop around).

### 3. Truss Cavity or Side of Rafter Method

- Utilize either 16" or 24" Reflective/Bubble product (depending on truss/rafter spacing).
- Product will be installed parallel to the truss/rafter direction.
- Begin at the top of the cavity.
- Staple the product (either Staple Tab (ST Reflective/Bubble) or the edge of the BP Reflective/Bubble product) to the side of the top chord of the truss (the structural 2"x 4" (or 2"x 6") that is attached to the roof decking) or the side of the rafter.
- Continue down length of truss/rafter stapling at 2" to 3" intervals - Repeat on opposite truss/rafter.
- Allow for proper ventilation. See note below on ventilation.
- A minimum of a 1/4" continuous air gap should be present between the product and the roof decking - Do not staple the product directly to the deck - This product is not perforated and could potentially condensate.
- Do not block any venting (cut around).

**Ventilation:** Good ventilation in your attic increases your comfort and helps the materials of your house last longer. Be sure not to block ventilation paths when you install Reflectix®.

### Review These Important Safety Guidelines Prior to Installation:

- **ALWAYS** check local building codes before installing Reflectix®.
- **ALWAYS** check the area you are insulating and make any needed repairs. Any worn wiring should be replaced before you begin installing Reflectix®.
- **ALWAYS** make sure work areas are well ventilated and well lighted.
- **ALWAYS** use eye protection when operating a staple gun.
- **ALWAYS** use caution and common sense when using a staple gun. Be aware of where electrical wiring is located. Stapling into a wire can cause severe shock or death. **NEVER** staple into electrical wiring.
- **ALWAYS** be careful when working with large pieces of Reflectix® on windy days.
- When installing Reflectix® on bright sunny days, it is best to wear sunglasses.
- Do not work in areas such as attics when temperatures are too hot.
- Visit our website at [www.reflectixinc.com](http://www.reflectixinc.com) for additional product and installation information.

**Please Note:** The intention of these Installation Instructions and 3-D renderings are for the sole purpose of illustrating the correct location and relative position of the Reflectix® products in specific building assemblies. The correct construction methods and techniques are the responsibility of the installer or contractor. The methods outlined are recommendations on location of the Reflectix® products as a guideline. There are no claims on the part of Reflectix, Inc. that these building assemblies are finite standards or meet building code requirements (as they can vary by region).



#### REFLECTIVE PRODUCTS

A Division of Balcan Innovations, Inc.

#1 School St. (POB 108) Markleville, IN 46056

(800) 879-3645

E: [customerservice@reflectixinc.com](mailto:customerservice@reflectixinc.com)

[www.reflectixinc.com](http://www.reflectixinc.com)

Revised 022025