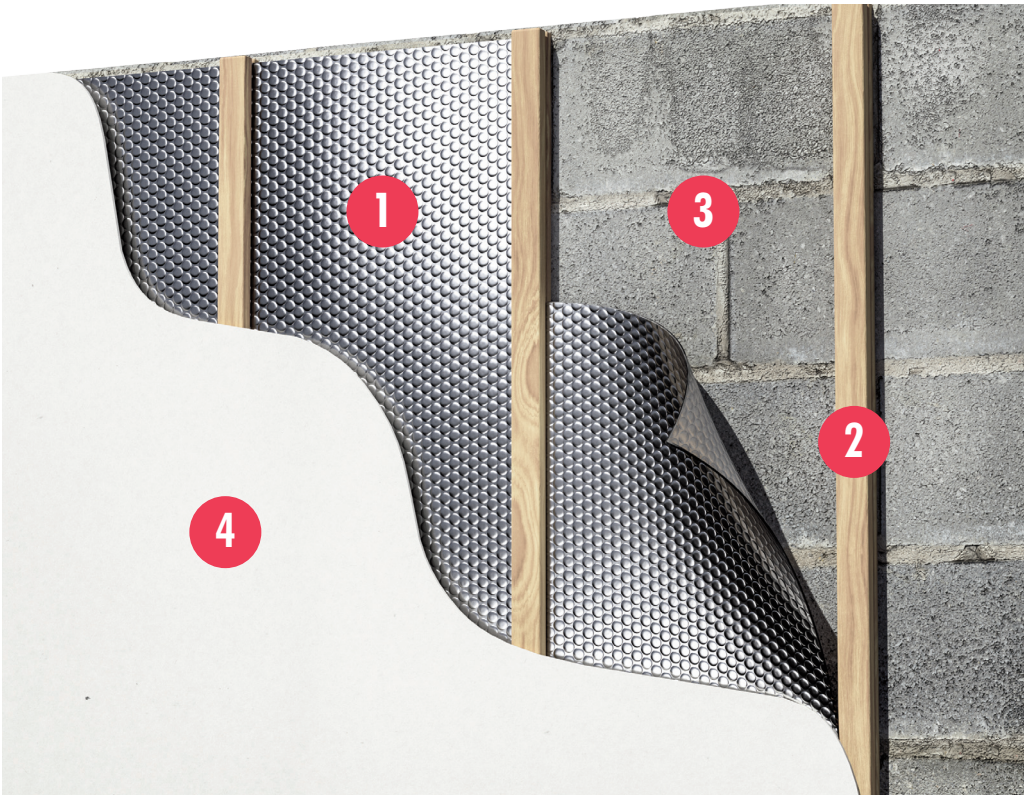


Pro | Wall - Masonry | R-3.7, R-7.0

Reflectix® Installation Instructions



1. Reflectix® Insulation
2. 2"x 2" (nominal) Furring Strip
3. Concrete Block Wall
4. Sheet Rock

Tools Required:

Safety Glasses

Staple Gun

Tape Measure

Utility Knife/Scissors

Note: Installation instructions and illustrated drawings are recommendations only, while proper local construction methods are the responsibility of the installer.

Recommended Products:

- Staple Tab, Reflective/Bubble/Bubble/Reflective - Roll: ST16050 (16"x 50'), ST16100 (16"x 100'), ST24050 (24"x 50'), ST24100 (24"x 100')

Installation Instructions: (There are 2 "levels of benefit" options)

1. R-3.7 (1"x 2" nominal furring)

- Attach 1"x 2" (nominal) furring strips vertically at an interval of 16" on center to the masonry wall (with an adhesive or fastener that is specified for this application).
- Cut the Reflectix® Reflective/Bubble/Bubble/Reflective, Staple Tab product (using scissors or a utility knife) into lengths equal to the height of the wall (floor to ceiling).
- Staple the product to the face of the furring strip - product seams should split on a furring strip.
- One air space is created between the Reflectix® and the masonry wall.
- Finish with interior panel (or sheetrock) of choice.

2. R-7.0 (2"x 2" nominal furring)

- Same as above, except the product is not stapled to the face of the furring strip.
- Staple the product to the side of the furring strip at a depth of 3/4". The goal is to split the cavity (in two) into approximately equal air spaces.
- The two air spaces created are: one between the Reflectix® and the masonry wall, and the other between the new interior panel and the Reflectix®.

Review These Important Safety Guidelines Prior to Installation:

- **ALWAYS** check local building codes before installing Reflectix®.
- **ALWAYS** check the area you are insulating and make any needed repairs. Any worn wiring should be replaced before you begin installing Reflectix®.
- **ALWAYS** make sure work areas are well ventilated and well lighted.
- **ALWAYS** use eye protection when operating a staple gun.
- **ALWAYS** use caution and common sense when using a staple gun. Be aware of where electrical wiring is located. Stapling into a wire can cause severe shock or death. **NEVER** staple into electrical wiring.
- **ALWAYS** be careful when working with large pieces of Reflectix® on windy days.
- When installing Reflectix® on bright sunny days, it is best to wear sun glasses.
- Do not work in areas such as attics when temperatures are too hot.
- Visit our website at www.reflectixinc.com for additional product and installation information.

Please Note: The intention of these Installation Instructions and 3-D renderings are for the sole purpose of illustrating the correct location and relative position of the Reflectix® products in specific building assemblies. The correct construction methods and techniques are the responsibility of the installer or contractor. The methods outlined are recommendations on location of the Reflectix® products as a guideline. There are no claims on the part of Reflectix, Inc. that these building assemblies are finite standards or meet building code requirements (as they can vary by region).

Reflectix, Inc.

#1 School Street (P.O. Box 108)

Markleville, IN 46056

Ph: (800) 879-3645 (US/Can)

(765) 533-4332

Fax: (765) 533-2327

Email: customerservice@reflectixinc.com

Web: www.reflectixinc.com

www.youtube.com/ReflectixInsulation

www.facebook.com/ReflectixInsulation

www.linkedin.com

www.pinterest.com/reflectixinc

Revised 012021