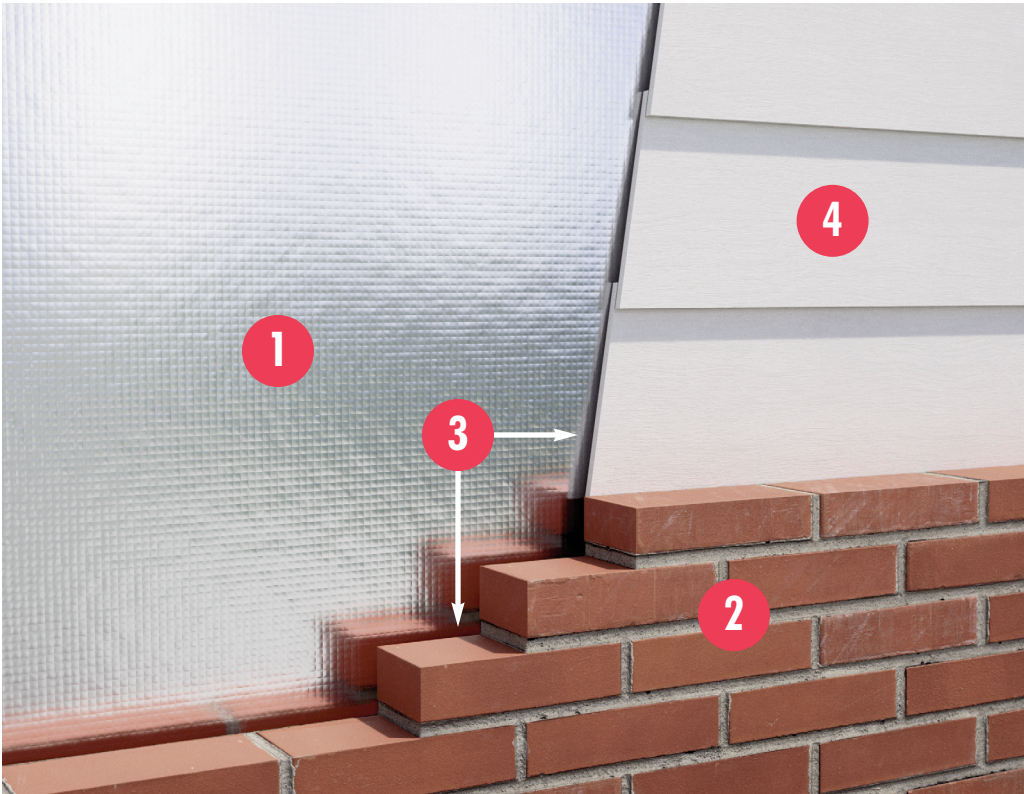


# DIY | House Wrap | Behind Brick/Siding

R-3.4 Behind Brick

R-2.5 Behind Aluminum or Vinyl Siding

Reflectix® Installation Instructions



1. Reflectix® Radiant Barrier
2. Brick
3. Air Space
4. Aluminum or Vinyl Siding

## Tools Required:

- Safety Glasses
- Staple Gun
- Tape Measure
- Utility Knife/Scissors

## Recommended Product:

- Radiant Barrier, Reflective/Scrim/Reflective - Roll: RB4812550 (48" x 125')

## Installation Instructions:

- Prior to installing the exterior finish, staple the Reflectix® Reflective/Scrim/Reflective, Radiant Barrier product (either vertically or horizontally) directly to the exterior side of the structural panel.
- Overlap the seams 2". Finish the exterior with brick or aluminum/vinyl siding.

## Review These Important Safety Guidelines Prior to Installation:

- **ALWAYS** check local building codes before installing Reflectix®.
- **ALWAYS** check the area you are insulating and make any needed repairs. Any worn wiring should be replaced before you begin installing Reflectix®.
- **ALWAYS** make sure work areas are well ventilated and well lighted.
- **ALWAYS** use eye protection when operating a staple gun.
- **ALWAYS** use caution and common sense when using a staple gun. Be aware of where electrical wiring is located. Stapling into a wire can cause severe shock or death. **NEVER** staple into electrical wiring.
- **ALWAYS** be careful when working with large pieces of Reflectix® on windy days.
- When installing Reflectix® on bright sunny days, it is best to wear sun glasses.
- Do not work in areas such as attics when temperatures are too hot.
- Visit our website at [www.reflectixinc.com](http://www.reflectixinc.com) for additional product and installation information.

**Please Note:** The intention of these Installation Instructions and 3-D renderings are for the sole purpose of illustrating the correct location and relative position of the Reflectix® products in specific building assemblies. The correct construction methods and techniques are the responsibility of the installer or contractor. The methods outlined are recommendations on location of the Reflectix® products as a guideline. There are no claims on the part of Reflectix, Inc. that these building assemblies are finite standards or meet building code requirements (as they can vary by region).



### REFLECTIVE PRODUCTS

A Division of Balcan Innovations, Inc.

#1 School St. (POB 108) Markleville, IN 46056

(800) 879-3645

E: [customerservice@reflectixinc.com](mailto:customerservice@reflectixinc.com)

[www.reflectixinc.com](http://www.reflectixinc.com)

Revised 022025