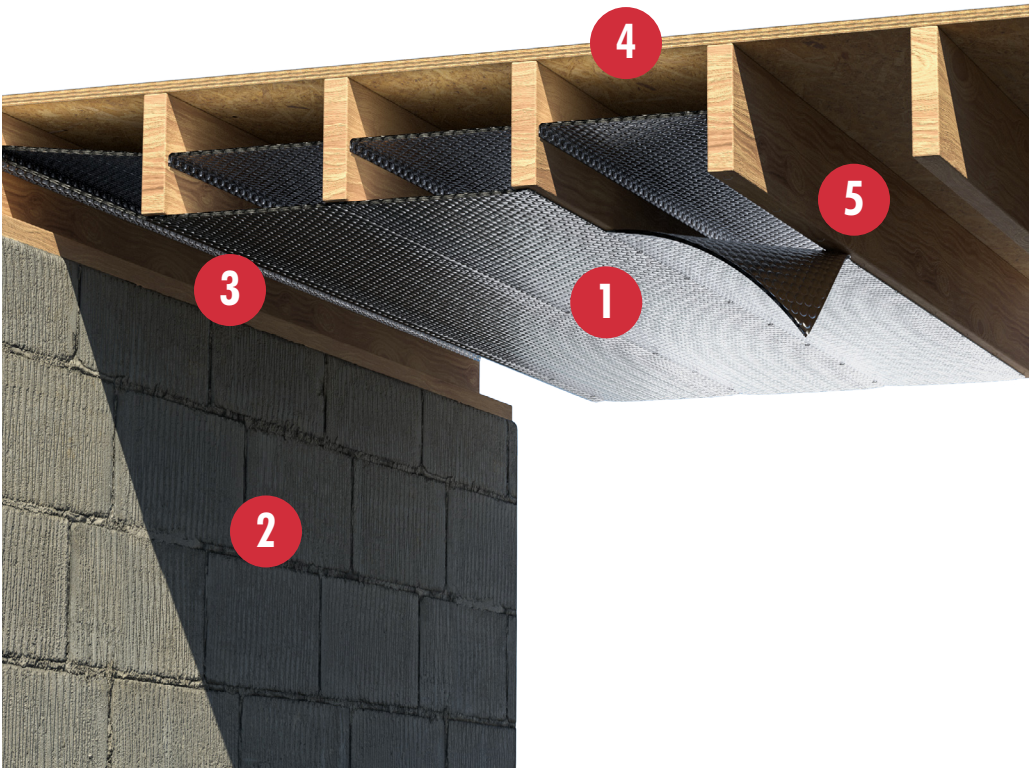


Pro | Crawl Space | R-21

Reflectix® Installation Instructions



1. Reflectix® Insulation
2. Concrete Block
3. Band Board
4. Sub-Floor
5. Floor Joist

Tools Required:

Safety Glasses
Staple Gun
Tape Measure
Utility Knife/Scissors

Note: Use at least 3/8 inch staples that are Heavy Duty or Galvanized.

Note: Installation instructions and illustrated drawings are recommendations only, while proper local construction methods are the responsibility of the installer.

Recommended Products:

- Reflective/Bubble/Bubble/Reflective - Roll: BP24050 (24" x 50'), BP24100 (24" x 100')
- Staple Tab, Reflective/Bubble/Bubble/Reflective - Roll: ST16050 (16" x 50'), ST16100 (16" x 100'), ST24050 (24" x 50'), ST24100 (24" x 100')

This application meets the thermal performance requirements for new construction in the 2015, 2018 and 2021 International Energy Conservation Codes for Climate Zones 1, 2, 3 and 4 (except for 4 Marine).

Note: This product is reflective on both sides and the direction of product installation is not pertinent to thermal performance.

Installation Instructions:

- Inspect the crawl space and make any needed repairs before installing Reflectix® Reflective/Bubble product.
- For floor joists that are 16" on-center, the installation is easiest with the Reflectix® Staple Tab (ST) product.
- Determine if there are water pipes and heating ducts which hang below the floor joists. They will need to be insulated. There is no need to wrap water pipes or duct work that fall between floor joists. Reflectix® will provide adequate insulating without extra wrapping.
- Begin at one end of the house and staple the first course of product to the top of the band board or the subfloor (also terminating this course in this fashion). Insert the Reflectix® half way up into the joist cavity and staple (at approximately 3" to 4" intervals) the edge of the product to the side of the joist. The resulting product installation will split the cavity

into two approximately equal air spaces. It is easiest to utilize the Reflectix® Reflective/Bubble/Bubble/Reflective, Staple Tab product for this step.

- For cross bracing, refer to the type of bracing directly below for installation techniques:
Solid Wood: Terminate the product at the brace. End staple to the middle of the brace. Continue with the installation on the opposite side, stapling the product to the brace at the approximate midpoint in the cavity.
Metal or Wooden Slats - Cross Braced: Extend the product 5 inches beyond the brace. Cut the product perpendicular to the joist direction at this point. Cut a slit down the middle of the product 3 inches beyond the middle of the cross. Run each flap of product through the cross (one flap on each side), stapling the product to the side of the joist. Continue the product run on the opposite side of the cross brace as before. Tape all seams (horizontal and parallel) with Reflectix® Foil Tape.
- Continue with the second course of product at one end of a joist cavity (after the first course has been installed) and secure the product "end" with staples to the band board. Proceed down the joists by stapling each edge (or middle of the Reflective/Bubble/Bubble/Reflective 48" wide product) to the face (bottom surface) of each joist. Staple the product at intervals of approximately 3" to 4". At the end of the product run, staple the Reflectix® to the band board.
- Seal the seams with Reflectix® Foil Tape. This product is a vapor barrier with the seams sealed, no additional vapor barrier products are necessary.
- Any penetrations, openings, rips or tears shall be sealed with Reflectix® Foil Tape or an equivalent.

Review These Important Safety Guidelines Prior to Installation:

- **ALWAYS** check local building codes before installing Reflectix®.
- **ALWAYS** check the area you are insulating and make any needed repairs. Any worn wiring should be replaced before you begin installing Reflectix®.
- **ALWAYS** make sure work areas are well ventilated and well lighted.
- **ALWAYS** use eye protection when operating a staple gun.
- **ALWAYS** use caution and common sense when using a staple gun. Be aware of where electrical wiring is located. Stapling into a wire can cause severe shock or death. **NEVER** staple into electrical wiring.
- **ALWAYS** be careful when working with large pieces of Reflectix® on windy days.
- When installing Reflectix® on bright sunny days, it is best to wear sunglasses.
- Do not work in areas such as attics when temperatures are too hot.
- Visit our website at www.reflectixinc.com for additional product and installation information.

Please Note: The intention of these Installation Instructions and 3-D renderings are for the sole purpose of illustrating the correct location and relative position of the Reflectix® products in specific building assemblies. The correct construction methods and techniques are the responsibility of the installer or contractor. The methods outlined are recommendations on location of the Reflectix® products as a guideline. There are no claims on the part of Reflectix, Inc. that these building assemblies are finite standards or meet building code requirements (as they can vary by region).



REFLECTIVE PRODUCTS

A Division of Balcan Innovations, Inc.

#1 School St. (POB 108) Markleville, IN 46056

(800) 879-3645

E: customerservice@reflectixinc.com

www.reflectixinc.com

Revised 022025