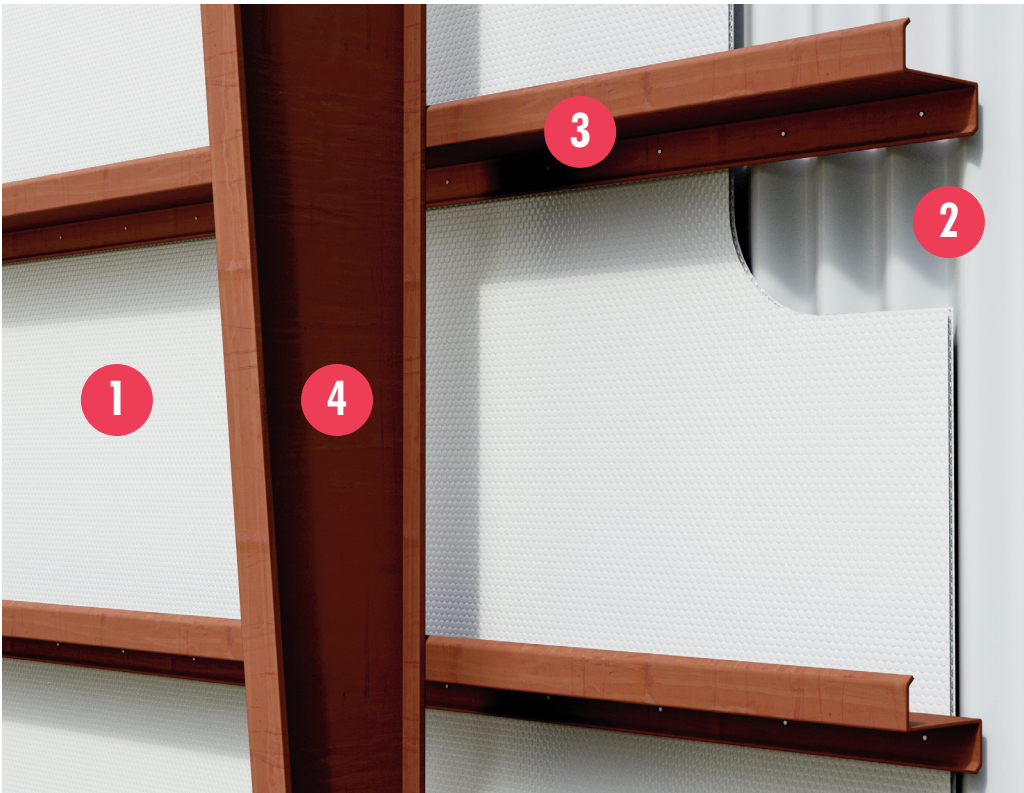


Metal Building | Wall | New

Reflectix Installation Instructions



1. Reflectix® Insulation
2. Exterior Wall Panel
3. Girt
4. Red Metal (Structural Frame)

Tools Required:

- Safety Glasses
- Tape Measure
- Utility Knife
- Screw Gun
- Staple Gun

Recommended Products:

- Reflective/Bubble/Bubble/White - Roll: RDBW48100 (48"x 100')

R-4.6 Open Interior with a 3/4" Thermal Break

R-3.7 Open Interior with a Nominal 3/4" Drap in Product (No Thermal Break)

Installation Instructions: (There are 2 options)

1. Installed with 3/4" Thermal Breaks

- The Reflectix® Insulation is installed with the "white side" towards the interior of the building.
- Install Reflectix® Reflective/Bubble/Bubble/White product vertically, using 1/2" self tapping screws to secure the insulation to the exterior of the C or Z girts.
- Tape the seams with a Reflectix® Foil Tape (goal is an air-tight, snug seam seal).
- Install a 3/4" thermal break and attach corrugated metal exterior finish.

2. Installed with a 3/4" Drap in Product (No Thermal Break)

- Per instructions above without the thermal break.
- When installing the product, insure there is a drap (towards the interior) of at least 3/4" at the center of the cavity.

Calculation Disclaimer: All values are calculated based on the "ASHRAE Handbook of Fundamentals".

Review These Important Safety Guidelines Prior to Installation:

- **ALWAYS** check local building codes before installing Reflectix®.
- **ALWAYS** check the area you are insulating and make any needed repairs. Any worn wiring should be replaced before you begin installing Reflectix®.
- **ALWAYS** make sure work areas are well ventilated and well lighted.
- **ALWAYS** use eye protection when operating a staple gun.
- **ALWAYS** use caution and common sense when using a staple gun. Be aware of where electrical wiring is located. Stapling into a wire can cause severe shock or death. **NEVER** staple into electrical wiring.
- **ALWAYS** be careful when working with large pieces of Reflectix® on windy days.
- When installing Reflectix® on bright sunny days, it is best to wear sun glasses.
- Do not work in areas such as attics when temperatures are too hot.
- Visit our website at www.reflectixinc.com for additional product and installation information.

Please Note: The intention of these Installation Instructions and 3-D renderings are for the sole purpose of illustrating the correct location and relative position of the Reflectix® products in specific building assemblies. The correct construction methods and techniques are the responsibility of the installer or contractor. The methods outlined are recommendations on location of the Reflectix® products as a guideline. There are no claims on the part of Reflectix, Inc. that these building assemblies are finite standards or meet building code requirements (as they can vary by region).

Reflectix, Inc.

#1 School Street (P.O. Box 108)

Markleville, IN 46056

Ph: (800) 879-3645 (US/Can)

(765) 533-4332

Fax: (765) 533-2327

Email: customerservice@reflectixinc.com

Web: www.reflectixinc.com

www.youtube.com/ReflectixInsulation

www.facebook.com/ReflectixInsulation

www.linkedin.com

www.pinterest.com/reflectixinc

Revised 012021