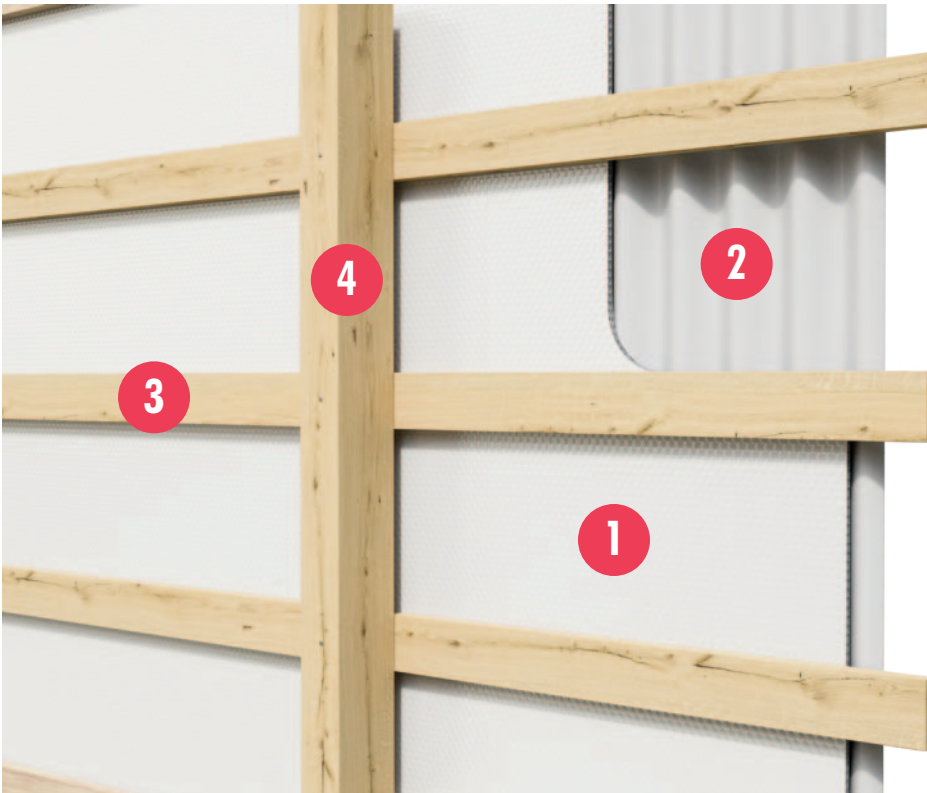


# Post Frame Building | Wall | New

## Reflectix Installation Instructions



1. Reflectix® Insulation
2. Exterior Wall Panel
3. Girt
4. Post

### Tools Required:

Safety Glasses  
Tape Measure  
Utility Knife  
Staple Gun

### Recommended Product:

- Reflective/Bubble/Bubble/White - Roll: RDBW48100 (48" x 100')

### Inside the Girts

Open Interior: 4.2

### Outside the Girts

Open Interior: R-3.7

### Installation Instructions: (There are 2 options)

#### 1. Product Inside the Girts

- The Reflectix® Insulation is installed with the "white side" towards the interior of the building.
- Attach the product using 5/16" staples at approximately 4" intervals.
- Staple the Reflectix® Reflective/Bubble/Bubble/White product to the outside of the top girt.
- Staple the product to the inside of the remaining girts.
- Tape the seams with a Reflectix® Foil Tape (goal is an air-tight, snug seam seal).

#### 2. Product Outside the Girts

- The Reflectix® Insulation is installed with the "white side" towards the interior of the building.

- Attach the product using 5/16" staples at approximately 4" intervals.
- Staple the Reflectix® Reflective/Bubble/Bubble/White product to the outside of the top girt.
- Staple the product to the outside of the remaining girts. Insure there is a drape of at least 3/4" (towards the interior of the building) at the center of each cavity.
- Tape the seams with a Reflectix® Foil Tape (goal is an air-tight, snug seam seal).
- Attach outside panel.

Calculation Disclaimer: All values are calculated based on the "ASHRAE Handbook of Fundamentals".

#### Review These Important Safety Guidelines Prior to Installation:

- **ALWAYS** check local building codes before installing Reflectix®.
- **ALWAYS** check the area you are insulating and make any needed repairs. Any worn wiring should be replaced before you begin installing Reflectix®.
- **ALWAYS** make sure work areas are well ventilated and well lighted.
- **ALWAYS** use eye protection when operating a staple gun.
- **ALWAYS** use caution and common sense when using a staple gun. Be aware of where electrical wiring is located. Stapling into a wire can cause severe shock or death. **NEVER** staple into electrical wiring.
- **ALWAYS** be careful when working with large pieces of Reflectix® on windy days.
- When installing Reflectix® on bright sunny days, it is best to wear sun glasses.
- Do not work in areas such as attics when temperatures are too hot.
- Visit our website at [www.reflectixinc.com](http://www.reflectixinc.com) for additional product and installation information.

**Please Note:** The intention of these Installation Instructions and 3-D renderings are for the sole purpose of illustrating the correct location and relative position of the Reflectix® products in specific building assemblies. The correct construction methods and techniques are the responsibility of the installer or contractor. The methods outlined are recommendations on location of the Reflectix® products as a guideline. There are no claims on the part of Reflectix, Inc. that these building assemblies are finite standards or meet building code requirements (as they can vary by region).



#### REFLECTIVE PRODUCTS

A Division of Balcan Innovations, Inc.

#1 School St. (POB 108) Markleville, IN 46056

(800) 879-3645

E: [customerservice@reflectixinc.com](mailto:customerservice@reflectixinc.com)

[www.reflectixinc.com](http://www.reflectixinc.com)

Revised 022025