

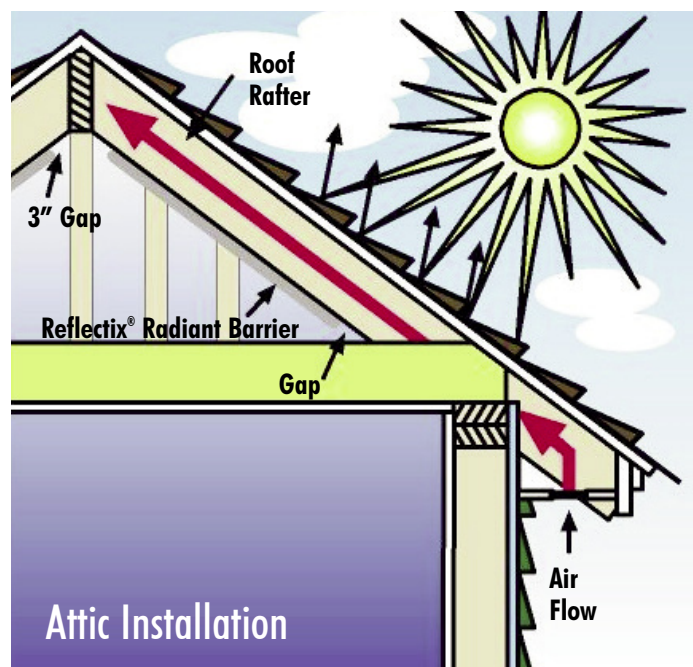
# Introducing Reflectix® Radiant Barrier (RB4812550)

## Product Description:

The Reflectix® Radiant Barrier product consists of two sheets of highly reflective (96%) film bonded together, enclosing a woven polyethylene fabric, perforated. The product is available in a 4'x 125' roll (500 sq ft). Product # RB4812550

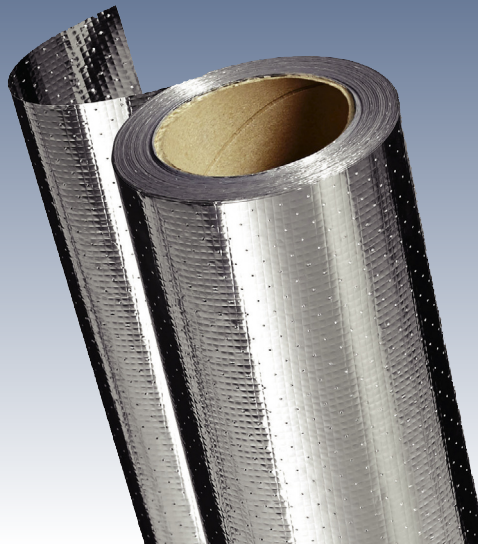
## Additional Features and Benefits:

- Saves Your Energy Dollar
- Blocks 96% of the Radiant Energy From Entering Your Home
- Reduces a Home's Air Conditioning by up to 10%
- Improves Efficiency of Attic-Mounted HVAC and Ducts



Staple product to the bottom of the rafters, overlap seams 2" and insure a gap at the peak (3") and along lower roof line (as convenient depending on roof pitch). Additionally, install product across gable studs. An alternative installation (Southern USA only) would involve stapling the product directly to the decking between the rafters (or trusses) as depicted in the Alternate Attic Installation (upper right).

**Note:** Attic installed Radiant Barriers provide benefits on hot sunny days. For this reason they are recommended primarily for installation in the Southern Zone of the USA (due to the amount of AC usage) but will provide reduced heat gain into the home wherever they are installed. Verify location with our Zip Code Zone locator at [www.reflectixinc.com/zip-code-zone-locator](http://www.reflectixinc.com/zip-code-zone-locator), or call (800) 879-3645.



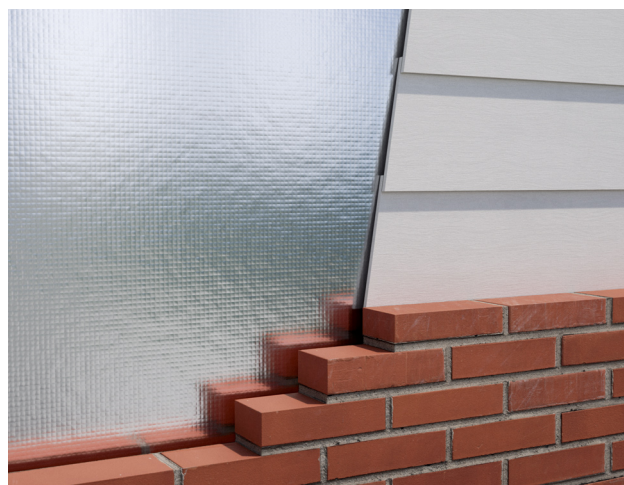
## Technical Data:

|                                  |                         |
|----------------------------------|-------------------------|
| Roll Dimensions                  | 48" x 125'              |
| Flame Spread:                    | Less than 25 (ASTM E84) |
| Smoke Development:               | Less than 50 (ASTM E84) |
| Emissivity:                      | 0.04                    |
| Reflectivity of Infrared Energy: | 96% (ASTM C1371)        |
| Permeability:                    | 6.3 Perms (ASTM E96)    |

## Alternate Attic Installation (Southern USA only)



## House Wrap Behind Brick or Aluminum/Vinyl Siding



# Common Questions About Radiant Barriers

## What is a Radiant Barrier?

- A Radiant Barrier is an attic installed product that reduces radiant heat gain into the home.
- This product, by ASTM standard, must re-transmit less than 10% of the energy it encounters (the Reflectix® Radiant Barrier is less than 6%)
- A Radiant Barrier installed below the roof decking will block 96% of the energy the decking would ordinarily transfer into the home.

## What benefits from a Radiant Barrier can a home owner expect?

- A cooler attic results in a cooler structure with less AC usage.
- A homeowner can expect to save 7% to 10% off the AC utility bill for the home.

**Note:** A reflective product installed in an open attic as a Radiant Barrier has no R-value. R-values for reflective products are obtained when the product faces an air space in a “enclosed cavity”.

## Will the Reflectix® product hurt my shingles?

- Substantial research has been done on this issue. The answer is “no”.
- There are a wide-range of mechanisms at work which dissipate the heat blocked by the product.
- Shingle temperatures do increase approximately 2 - 5° F. But this additional increase is far below the 200° F that most shingles are warranted, and produces no adverse effects.

## Is ventilation required for a Radiant Barrier?

No, ventilation is not required, but it is very beneficial when free air flow is present. If an attic system has a mass insulation (such as fiberglass), a radiant barrier and a ridge vent, it has addressed three types of heat flow; conductive, convective and radiant within that system.

## What is the fire rating of the Reflectix® Reflective/Woven Polyethylene/Reflective Radiant Barrier?

The Reflectix® Radiant Barrier has a Class A/Class 1 Fire Rating and meets all fire and smoke safety requirements for federal, state and local building codes (ASTM E84).

## When installed in a Cathedral Ceiling, what are the product benefits?

- A Radiant Barrier - The product blocks 96% of the radiant heat that the roof decking would transmit into the cavity.
- Easy installation and convenient roll sizes.
- Additionally, resists growth of fungi, mold and mildew.
- There are two methods for installing Reflectix® products in a Cathedral Ceiling. If you need to verify your location, use our Zip Code Zone Locator, or call (800) 879-3645.

## How does the product perform as a House Wrap behind Brick or Aluminum/Vinyl Siding?

- The product is perforated and provides a Water Vapor Permeability of 6.3 Perms (ASTM E96 A).
- This application has a Radiant Barrier benefit and also enhances the thermal performance of the overall wall system.

Reflectix, Inc., A Division of Balkan Innovations Inc.

#1 School St. (POB 108) Markleville, IN 46056

Ph: (800) 879-3645 (US/Can) · (765) 533-4332

Fax: (765) 533-2327

Email: [customerservice@reflectixinc.com](mailto:customerservice@reflectixinc.com)

[www.reflectixinc.com](http://www.reflectixinc.com)

