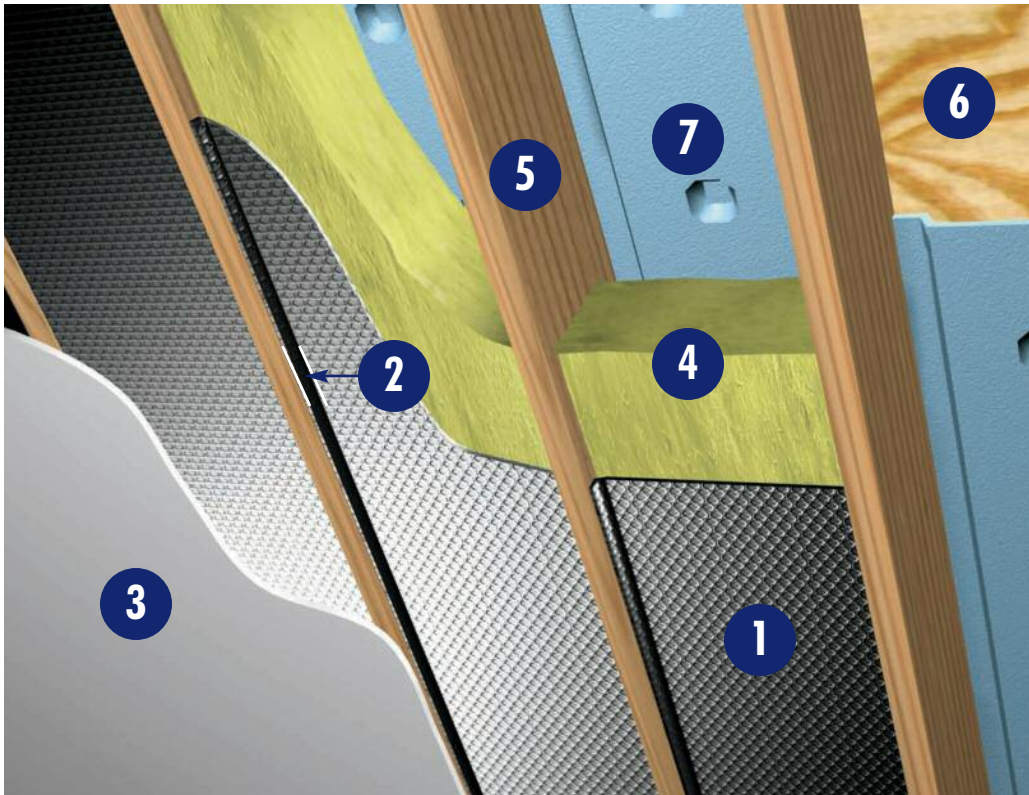


# DIY Cathedral Ceiling

## Reflectix® Installation Instructions

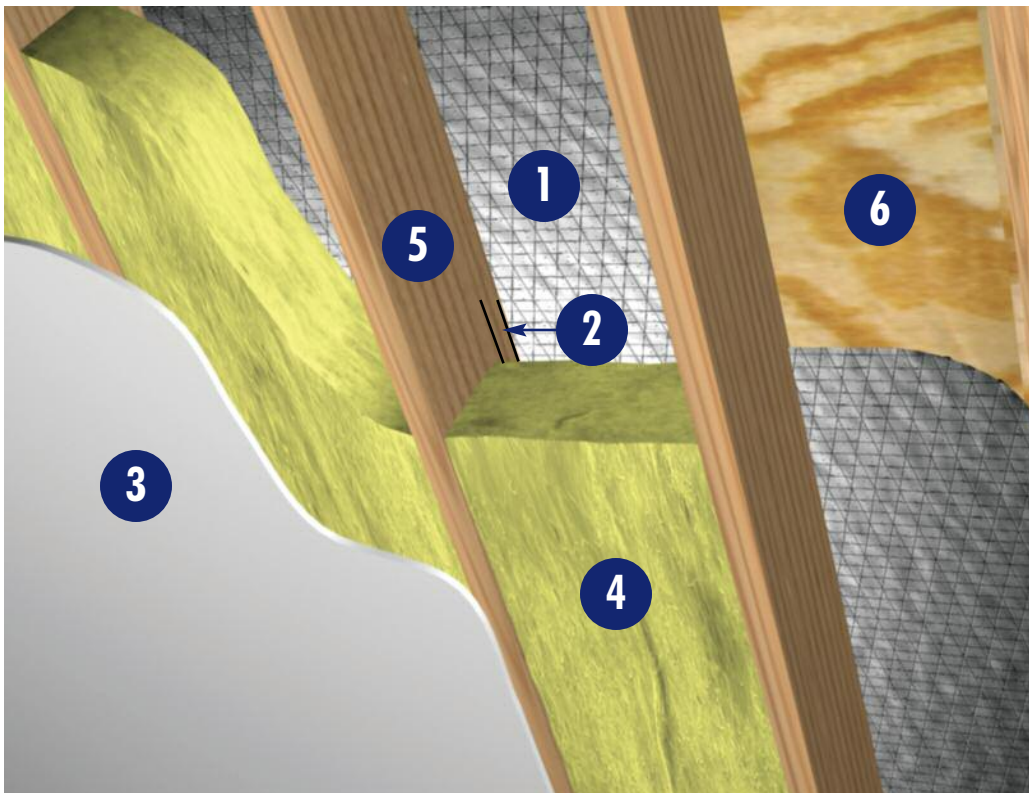


**Northern Zone of the USA -  
With Reflectix® Below the Mass  
Insulation • R-7.0 Summer &  
R-1.0 Winter and a Vapor/  
Moisture Barrier**

1. Reflectix® Insulation
2. Continuous 0.75" Air Space (minimum)
3. Sheet Rock
4. Fiberglass Insulation (non-compressed)
5. Rafter
6. Roof Decking
7. Rafter Cavity Vent

### Tools Required:

- Safety Glasses
- Staple Gun
- Tape Measure
- Utility Knife/Scissors



**Southern Zone of the USA -  
With Reflectix® Above the Mass  
Insulation • R-6.0 Summer &  
R-2.0 Winter or a Radiant  
Barrier - Blocks 94%+  
Radiant Heat**

1. Reflectix® Radiant Barrier
2. Continuous 0.75" Air Space (minimum)
3. Sheet Rock
4. Fiberglass Insulation (non-compressed)
5. Rafter
6. Roof Decking

### Tools Required:

- Safety Glasses
- Staple Gun
- Tape Measure
- Utility Knife/Scissors

### Recommended Products:

Reflective/Bubble/Bubble/Reflective - Roll: BP24025 (24"x 25'), BP48025 (48"x 25')  
Staple Tab, Reflective/Bubble/Bubble/Reflective - Roll: ST16025 (16"x 25'), ST24025 (24"x 25')  
Radiant Barrier, Reflective/Woven Fabric/Reflective - Roll (Heavy Duty): RB4812550 (48"x125')

There are two methods for installing Reflectix products in a Cathedral Ceiling. For the Regional Recommendation on which installation method you should consider for your home, please utilize the "Zip Code Zone Locator" function at [www.reflectixinc.com/zip-code-zone-locator](http://www.reflectixinc.com/zip-code-zone-locator), or contact our Customer Service Group at (800) 879-3645.



### Reflective Insulation

#### Installation Instructions:

(There are 2 options)

#### 1. Directly to Roof Deck - Above Fiberglass - Southern Zone of the USA Only

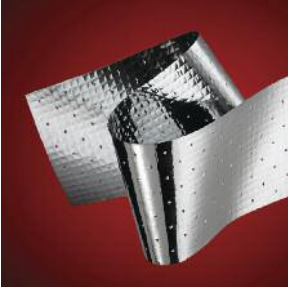
- Benefit - R-6.0 Summer & R-2.0 Winter
- It is easiest to install either 16" or 24" wide product (depending on rafter spacing).
- Begin at the top of the cavity. Run product flush to the decking, parallel to the rafter.
- Staple sheet directly to the deck (nails poking through the Reflectix® product from above will not interfere with performance).
- Do not block any venting (cut around).
- No need to cover rafters (no loop around).
- Ensure that a continuous air space (0.75 inch minimum) is on the bottom side of the Reflectix® product (required and for ventilation).
- Install venting and mass insulation per local codes and manufacturer's installation instructions.

#### 2. Attached to the Lower Edge of the Rafter

#### Below the Mass Insulation (Fiberglass) - Northern Zone of the USA Only

- Benefit - R-7.0 Summer & R-1.0 Winter and a Vapor/Moisture Barrier
- Either the 16" or 24" wide product (depending on rafter spacing) is recommended.
- The Staple Tab product is the easiest to work with for this application (but the Standard Edge product is equally effective).
- Install venting (required in Cathedral Ceilings) and mass insulation per local codes and manufacturer's installation instructions.
- A minimum of a 0.75" air space is required on the underside (towards the interior of the home) of the Reflectix® product. This air space can be created in one of two installation methods:
  1. Tuck the product up into the cavity and staple to the side of the rafter every 2 to 3 inches fully enclosing the rafter cavity.

2. Staple the product directly to the underside of the rafter every 2 to 3 inches fully enclosing the rafter cavity. Nail 1"x 2" (nominal) furring strips to the underside of the rafter (creating a continuous 0.75" cavity).
- Install interior panel per local codes and manufacturer's installation instructions.



### Reflective/Woven Fabric Radiant Barrier

#### **Installation Instructions:**

#### **Directly to Roof Decking - Above Fiberglass - Southern Zone of the USA Only**

- **Benefit - Radiant Barrier - Blocks 94%+ of radiant heat**
- **Cut the entire roll of product into 16" or 24" lengths with a miter saw (depending on rafter spacing).**
- **Begin at the top of the cavity. Run product flush to the decking, parallel to the rafter.**
- **Staple sheet directly to the deck (nails poking through the Reflectix® product from above will not interfere with performance).**
- **Do not block any venting (cut around).**
- **No need to cover rafters (no loop around).**
- **Ensure that a continuous air space (0.75 inch minimum) is on the bottom side of the Reflectix® product (required and for ventilation).**
- **Install venting and mass insulation per local codes and manufacturer's installation instructions.**

#### **Ventilation:**

**If ventilation is specified into your cathedral ceiling system, insure that you do not block ventilation paths when you install Reflectix®.**

#### **Review These Important Safety Guidelines Prior to Installation:**

- **ALWAYS** check local building codes before installing Reflectix®.
- **ALWAYS** check the area you are insulating and make any needed repairs. Any worn wiring should be replaced before you begin installing Reflectix®.
- **ALWAYS** make sure work areas are well ventilated and well lighted.
- **ALWAYS** use eye protection when operating a staple gun.
- **ALWAYS** use caution and common sense when using a staple gun. Be aware of where electrical wiring is located. Stapling into a wire can cause severe shock or death. **NEVER** staple into electrical wiring.
- **ALWAYS** be careful when working with large pieces of Reflectix® on windy days.
- **When installing Reflectix® on bright sunny days, it is best to wear sun glasses.**
- **Do not work in areas such as attics when temperatures are too hot.**
- **Visit our website at [www.reflectixinc.com](http://www.reflectixinc.com) for additional product and installation information.**

#### **Please Note:**

The intention of these Installation Instructions and 3-D renderings are for the sole purpose of illustrating the correct location and relative position of the Reflectix® products in specific building assemblies. The correct construction methods and techniques are the responsibility of the installer or contractor. The methods outlined are recommendations on location of the Reflectix® products as a guideline. There are no claims on the part of Reflectix, Inc. that these building assemblies are finite standards or meet building code requirements (as they can vary by region).

**Reflectix, Inc.**

**#1 School Street (P.O. Box 108)**

**Markleville, IN 46056**

**Ph: (800) 879-3645 (US/Can)**

**(765) 533-4332**

**Fax: (765) 533-2327**

**Email: [customerservice@reflectixinc.com](mailto:customerservice@reflectixinc.com)**

**Web: [www.reflectixinc.com](http://www.reflectixinc.com)**

**"Like Us" @ : [www.facebook.com/ReflectixInsulation](http://www.facebook.com/ReflectixInsulation)**

**[www.youtube.com/ReflectixInsulation](http://www.youtube.com/ReflectixInsulation)**

**[www.pinterest.com/reflectixinc](http://www.pinterest.com/reflectixinc)**

