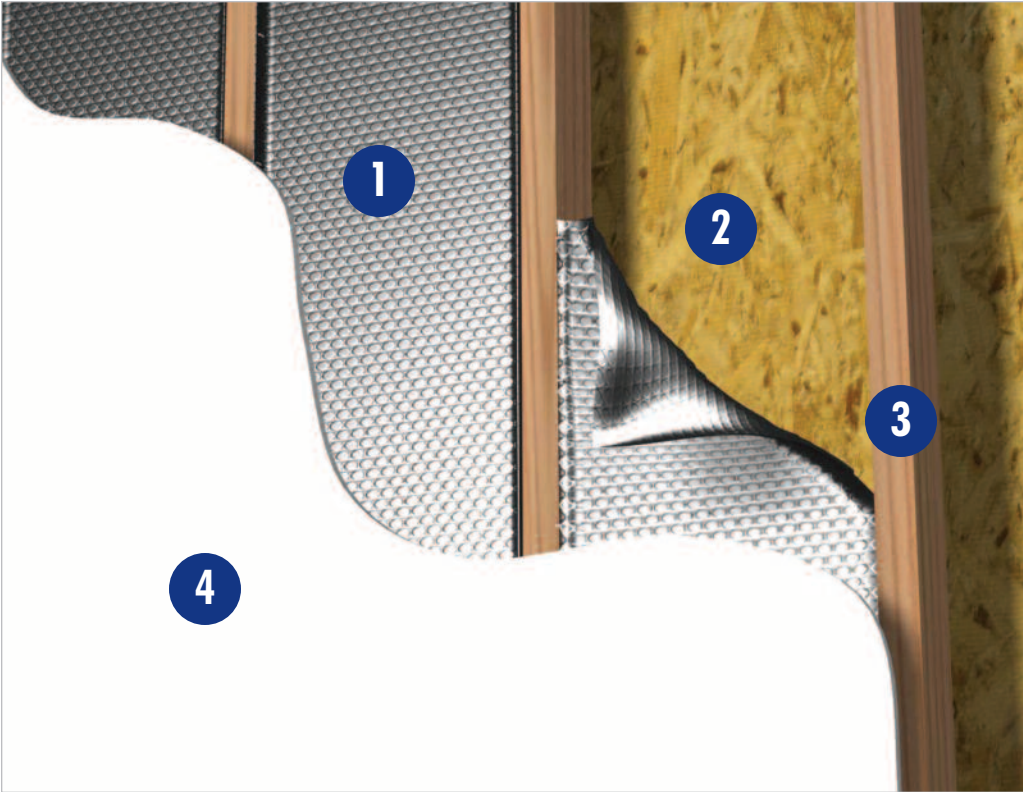


# DIY Storage Building

## Reflectix® Installation Instructions

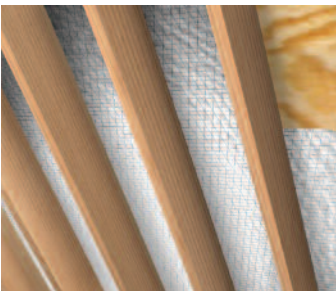


1. Reflectix® Product
2. Exterior Panel
3. 2" x 4" Stud
4. Interior Panel

### Tools Required:

Safety Glasses  
Staple Gun  
Tape Measure  
Utility Knife/Scissors

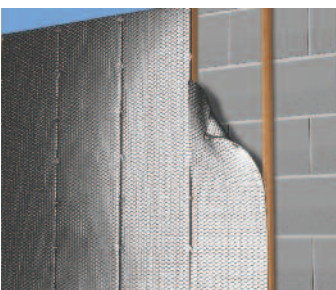
**Recommended Products:** Reflective/Bubble/Bubble/Reflective - Roll: BP24025 (24" x 25'), BP48025 (48" x 25')  
Staple Tab, Reflective/Bubble/Bubble/Reflective - Roll: ST16025 (16" x 25'), ST24025 (24" x 25')  
Radiant Barrier, Reflective/Woven Fabric/Reflective - Roll: RB4812550 (48" x 125')



### Installation Instructions:

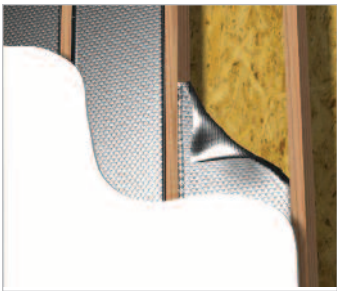
#### 1. Roof

- Refer to the Reflectix Webpage "DIY Attic".



#### 2. Wall - Masonry R-3.7 to R-6.1

- Refer to the Reflectix® Webpage "DIY Wall - Masonry".



### 3. Wall - 2"x 4" R-6.1 (no fiberglass)

- Determine if studs are 16" or 24" on center (This will determine whether the Reflectix® 16" or 24" product is needed).
- Place one corner edge of the Reflectix® in an upper corner of the stud cavity. At a point that splits the stud cavity; staple the product to the side of the stud (creating a 3/4" tab on the product).
- Proceed "down", stapling to the side of the stud every 2" - 3".
- Repeat procedure on opposite stud.
- The Goal: Create two approximately equal continuous 1 3/4" air spaces on each side of the Reflectix® Insulation.
- This application also provides a Vapor/Moisture Barrier.
- Finish wall interior with a panel or sheathing (Product is not specified as an interior wall covering).



### 4. Wall - 2"x 4" R-14.0 Total Assembly (R-3.9 and a Vapor Moisture Barrier for the Reflectix®)

- Refer to the Reflectix® Webpage "DIY Wall - Exterior - 2"x 4"".

### Review These Important Safety Guidelines Prior to Installation:

- **ALWAYS** check local building codes before installing Reflectix®.
- **ALWAYS** check the area you are insulating and make any needed repairs. Any worn wiring should be replaced before you begin installing Reflectix®.
- **ALWAYS** make sure work areas are well ventilated and well lighted.
- **ALWAYS** use eye protection when operating a staple gun.
- **ALWAYS** use caution and common sense when using a staple gun. Be aware of where electrical wiring is located. Stapling into a wire can cause severe shock or death. **NEVER** staple into electrical wiring.
- **ALWAYS** be careful when working with large pieces of Reflectix® on windy days.
- When installing Reflectix® on bright sunny days, it is best to wear sun glasses.
- Do not work in areas such as attics when temperatures are too hot.
- Visit our website at [www.reflectixinc.com](http://www.reflectixinc.com) for additional product and installation information.

### Please Note:

The intention of these Installation Instructions and 3-D renderings are for the sole purpose of illustrating the correct location and relative position of the Reflectix® products in specific building assemblies. The correct construction methods and techniques are the responsibility of the installer or contractor. The methods outlined are recommendations on location of the Reflectix® products as a guideline. There are no claims on the part of Reflectix, Inc. that these building assemblies are finite standards or meet building code requirements (as they can vary by region).

### Reflectix, Inc.

#1 School Street (P.O. Box 108)

Markleville, IN 46056

Ph: (800) 879-3645 (US/Can)

(765) 533-4332

Fax: (765) 533-2327

Email: [customerservice@reflectixinc.com](mailto:customerservice@reflectixinc.com)

Web: [www.reflectixinc.com](http://www.reflectixinc.com)

"Like Us" @ : [www.facebook.com/ReflectixInsulation](https://www.facebook.com/ReflectixInsulation)

[www.youtube.com/ReflectixInsulation](https://www.youtube.com/ReflectixInsulation)